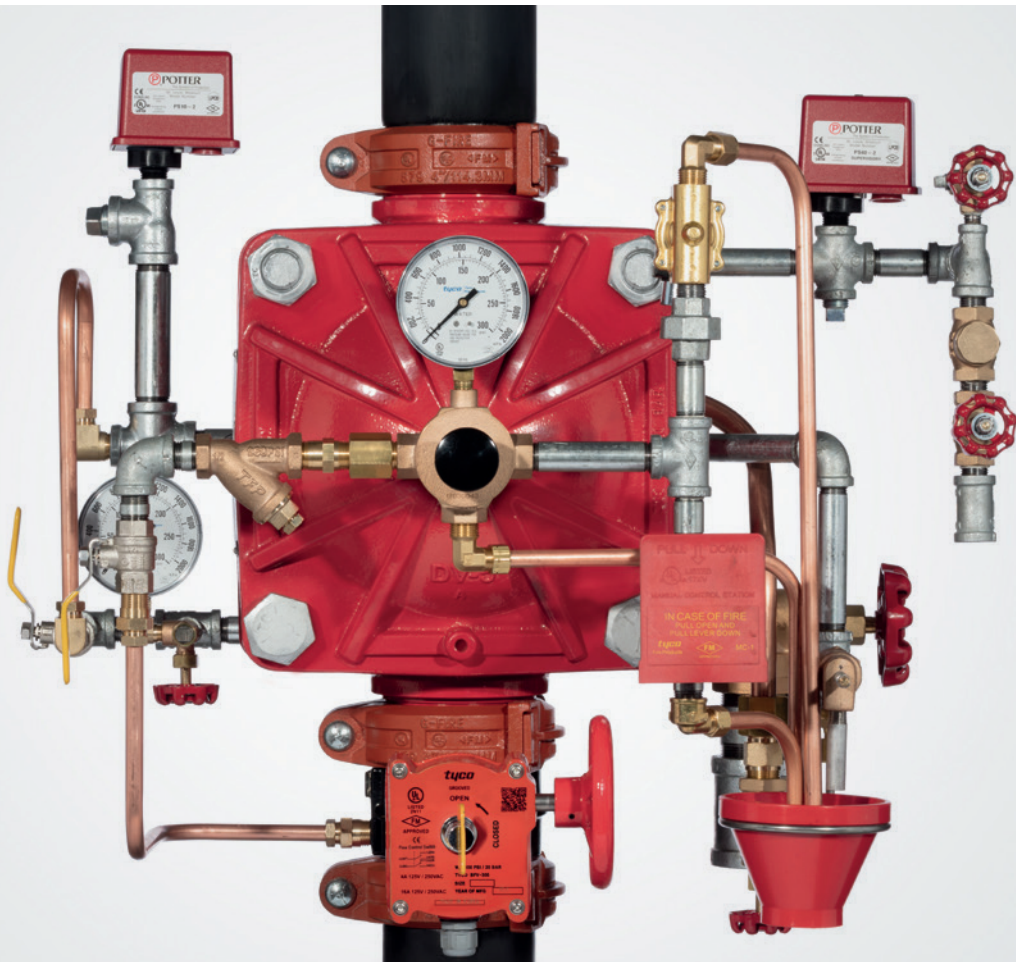




The DV-5A Deluge Valve



Deluge and pre-action fire protection systems

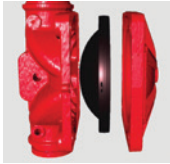
The power behind your mission



The DV-5A deluge valve is what happens when you're never satisfied with good enough.

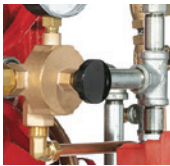
We streamlined the original DV-5, creating a more powerful and efficient deluge valve. The new DV-5A comes with a lower pressure drop and higher pressure rating of up to 300 PSI, plus a reduced footprint and integrated alarm port make installation and maintenance easier than ever. The difference is in the details.

Valve advantages. We kept the best and streamlined the rest.



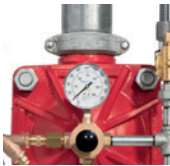
One moving part

Provides simple maintenance and operation



External reset

Saves time and effort, no need to remove the diaphragm cover



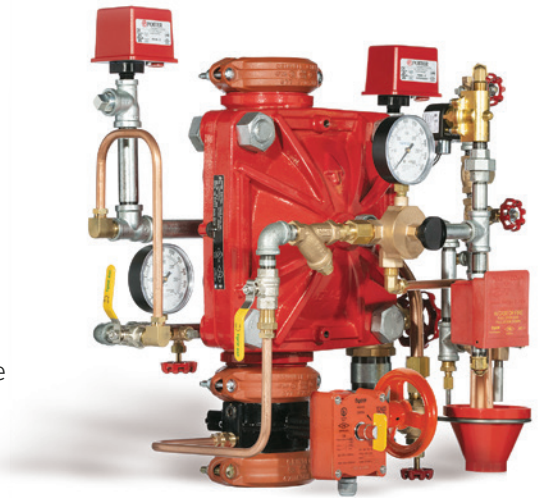
Higher pressure rating & lower pressure drop

Allows water to travel further at specified system pressure



QR code scanning

Provides instant access to technical information.



Pre-trimmed benefits. More compact and simpler to save time in the field.



Reduced footprint

Thanks to compact trim package



Integrated alarm port

Eliminates check valve in pre-action systems



BFV-300 Butterfly Valve included

A next generation butterfly valve with unique new features

Model availability.

Flexible options to fit your needs.

Sizes



1-1/2" thru 4" (DN40 thru DN100)



6" and 8" (DN150 and DN200)

Deluge

- Wet
- Dry
- Electric
- Remote resetting
- Remote reset pressure reducing

Pre-action

- Single interlock wet
- Single interlock dry
- Single interlock electric
- Double interlock electric/electric
- Double interlock electric/pneumatic
- Double interlock Type A (*Europe Only*)

Pre-trimmed models

Available for deluge and pre-action systems



BFV-300 Butterfly Valve

- Tapping boss locations save time with easy and fast connections to deluge valve
- Compact design – easier to handle, install and operate
- Options include supervisory open version to isolate the alarm valve and supervisory closed version for by-pass system
- Fully approved globally for greater assurance
- Standard on pre-trimmed DV-5A models in the Americas
(*available through request in Europe, Middle East, Africa and Asia Pacific*)

Always refer to the following Technical Data Sheets for a complete description of all listing criteria, design parameters, installation instructions, care and maintenance guidelines and our limited warranty.

TFP1311, TFP1316, TFP1321, TFP1325, TFP1326, TFP1411, TFP1416, TFP1421, TFP1461, TFP1466, TFP1485



About Johnson Controls

At Johnson Controls, we transform the environments where people live, work, learn and play. From optimizing building performance to improving safety and enhancing comfort, we drive the outcomes that matter most. We deliver our promise in industries such as healthcare, education, data centers and manufacturing. With a global team of 105,000 experts in more than 150 countries and over 130 years of innovation, we are the power behind our customers' mission. Our leading portfolio of building technology and solutions includes some of the most trusted names in the industry, such as Tyco®, York®, Metasys®, Ruskin®, Titus®, Frick®, Penn®, Sabroe®, Simplex®, Ansul® and Grinnell®.

For more information, visit www.johnsoncontrols.com or follow [@johnsoncontrols](https://twitter.com/johnsoncontrols) on Twitter

North America

1400 Pennbrook Parkway
Lansdale, PA 19446 USA
+1 215-362-0700
+1 800-558-5236

Europe

Kopersteden 1
Enschede, Overijssel 7547 TJ
The Netherlands
+31 (0) 53 428 4444

Middle East

Internet City, Office Park
Building Block D, Floor 3
Dubai, United Arab Emirates
+971 4455 0700

Asia Pacific

2 Serangoon North Avenue 5
#07-01
Singapore 554911
+65 6577 4360

The power behind **your mission**

